



Silver State Tole & Decorative Painters

March 2021 Newsletter

President's Message

Hello Everyone!

Happy spring! It's just around the corner. Although I must say this winter has been easy to live with compared to the rest of the country.

Many thanks to Dawn and Patty for getting our February Zoom meeting together. We still have a couple of glitches to work out using the Lady Bug system we use at the church and Zoom, and we'll be good to go!

Our class in February was fun and taught us new techniques in shading with color pencil. Thank you to Rayma Stewart, an Erika JoAnne certified teacher from California, for teaching the class.

In March Kaye Singer will be teaching an Ellen Stamillio pattern. You can paint it on a tray or break it into a couple of smaller pieces.

And in April we are finally going to be able to paint the winter menu piece with Judy Gibson.

And in May, Patty Clark is teaching the snow plate with a truck in the middle.

These classes were rescheduled from last year's programming and all look like fun projects. For further information see Kaye's program article on page 2.

The March through May classes will be on Zoom.

We have not yet heard anything from the church about returning for our meetings. While strides are being made in getting a handle on the pandemic, including vaccinations, we have no idea when we will be meeting again in person. Loretta reassured me that we are on her list to call when that time comes. Until then we will have to continue Zoom classes.

Several members have been asking to pay for classes, etc., via pay pal, Zelle, or some other online payment. The Board has voted to arrange for Zelle, and Kaye is in the process of setting this up. We will use it until December 2021 and then assess the program to see how it is working. Those of you who are not interested in this form of payment may continue to pay for classes with cash or a check. Look for further information in upcoming newsletters.

As always, if you have any concerns or questions, please feel free to contact me.

We are working on the new directory but until it is completed please use your 2020 directory for phone numbers/addresses.

Keep your brushes moving! There are some wonderful lessons on line, if interested. See you in March.

PatG, President

Membership Chair

Jan Greene

(916) 803-0455

ArtistJLGreene@outlook.com

Inside this issue:

Programs 2

A Celebrity in Our Midst 3

Community Service—the Power of Painting a Memory Box 3

March Board Meeting

Date: March 3

Time: 10 a.m.

Location: Zoom

Membership— Membership Directory

We are in the process of updating our 2021 SSTDP membership directory. If you don't have your picture in last year's directory or are new to our chapter, or just want a different picture, please send a selfie to Dawn Rivard so it can be included with your

information in the directory. We hope to have the new directories completed soon.

Hope all is well with you all. Take care and stay safe.

Jan Greene

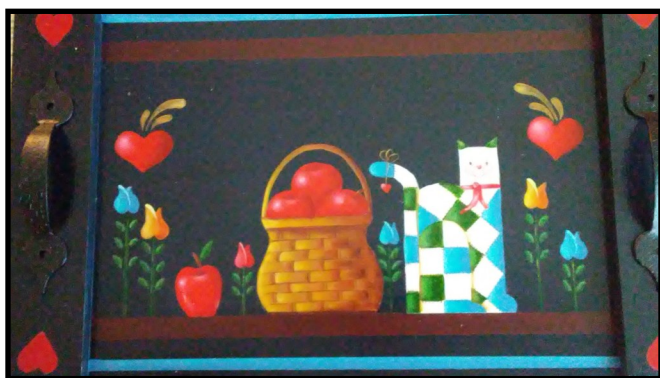
Programs

Reminder of the procedure change for paying the class fee and sign-up.

Sign-up with your check made payable to SSTDP and indicate in the "For _____" at the bottom left the class/month and mail to:

SSTDP
c/o Kaye Singer
P.O. Box 1460
Pahrump, NV 89041

MARCH 13—"BASKET & QUILTED CAT STILL LIFE"



Sign-up for this fun Zoom class with Kaye Singer.

This is a great opportunity to learn some new techniques and tricks. This is an adaptation of a by Ellen Stamilio who taught frequently at Steps in Pennsylvania.

The surface painting area is approximately 8.5" x 11"; however, the individual pieces can be painted each on its own separate surface if you want.

Instructions (including advance prep information) and photo will be emailed on receipt of the class fee.

Come join the fun!

Send your check made out to SSTDP for the \$20 workshop fee.

APRIL 10— "WINTER MENU" BY DEB ANTONIK, INSPIRED BY TERRY FRENCH

This cute piece will be taught by Judy Gibson!



It is painted on a tavern sign board. The overall size is 12" x 21.5" x 3/4". The inside painting surface is 12" x 14".

The wood for this project is available at JB Wood Products, Item number 90094, or you may have something in your stash. You do not need to purchase the stencil for the wording as Judy has included the lettering on the line drawing.

The surface is prepped with Black Slate Chalkboard Paint and requires 24-hour curing before you can paint the pattern on it.

The fee for this paint-in is \$15.00.

MAY 8—"WINTER SPLendor" BY LINDA LOVER

Head's up on ordering the plate for the May program taught by Patty Clark.

Those interested in this class must order their own surface from Smooth Cut Wood.

This is a special order item and not available from the website. The item description is: "round frame with snowflake laser cut outs that measures 8 3/8 in. diameter."



The exact cost is unknown but would be in the \$15 range for wood, plus shipping.

Contact information for Smooth Cut Wood Products:

- Phone: (888) 982-9663 or (503) 678-1318
- Email: smoothcutwood@yahoo.com

Make sure to mention that you are a member of the Silver State Toile & Decorative Painters taking the Linda Lover class from Patty Clark.

Also, with the major snow storms going on, you may only be able to leave a message. Patty learned in recent conversations with Smooth Cut Wood that they have power and phone outages so leaving a message and your contact information as soon as possible might be a good idea!

Kaye Singer

Celebrity in Our Midst

Christina Hilton has joined the ranks of “Published Artist”!! Her Floral Denim vest was published in the February issue of Painting World Magazine.

Also, the “Meet the Artist” features Diane Kellogg’s interview with Christina.

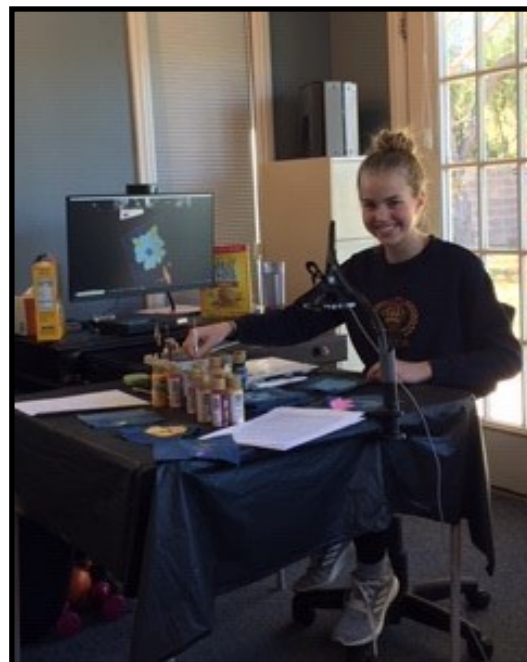
Cristina says she enjoys painting and finds it relaxing. The article also displays two other pieces of Christina’s artwork— a portrait of a friend and a painting she did in the 5th grade, which won 3rd Place in the Royal Brush National Art Contest. Christina talks about the floral subject matter and says the beauty of nature’s flowers was

the inspiration for her design.

If you are a subscriber to Painting World, to read the full article, checkout the February edition or look for it in the bookstores.

Congratulations, Christina!

Kaye Singer



Christina Hilton

Community Service—*The Power of Painting* *Memory Boxes*

For ideas to paint on memory boxes and instructions, visit the Tole Friends Memory Box Association group page on Facebook. The link is below.

<https://www.facebook.com/groups/1049988538423552/permalink/2369394253149634>

For even more information on ideas for memory boxes and how to paint them, check out the following four pages.

The testimonial at right, taken from the Facebook group mentioned above, shows the impact these boxes have on grieving families.



Terry Robin Zawacki ▸ Tole
Friends Memory Box
Association

June 5, 2020 at 6:05 AM · 🌐

**I retired last year and
was the perinatal
bereavement
coordinator for
Maryview Medical
Center in Portsmouth
Virginia. I just wanted
to thank you all for
your lovely work in
providing boxes for our
bereaved
families...they mean so
much to them!**

Let's Paint a Memory Box...

Those of you who know me, know that Memory Boxes are a real passion of mine.

A Memory Box is a box used by many organizations, such as a NICU or hospice, to contain the belongings of a deceased family members . Their exact purpose and suggestions vary from place to place. TCDP works with the local hospitals and uses the boxes for infant loss. Some boxes are also used in our program for foster children, as they age out. Paper mache boxes are supplied by TCDP and checked out and in to keep tally. Jewels are awarded for each box completed and an award is conveyed upon the member who paints the most boxes in a given year.

Here's my procedure and suggestions for your consideration. It is my way, based upon talking to nurses who dispense the boxes, but it has no official standing and is not a set of rules.

If you have any other tips for memory boxes (or anything else), please email me and I will include them in future newsletters.

1. Inspect the box for damage, tears, and cracks. If there is a broken section, tear (don't cut) some scrap paper into thin strips. Glue the strips over the break. Depending upon the size and severity of the break, you may have to repeat several times. Elmer's glue works fine. Glue the paper "bandaids" on both the inside and outside of the box where broken. I pick up broken paper mache boxes often at thrift shops "for pennies."

2. You can also patch a broken box or reinforce a weak box with decorative paper, ribbon, or paper doilies.

3. Paper mache can be sanded, but it tends to get "fuzzy". If you must, do so with a very light touch and fine sandpaper and only after sealing. A thin coat of wood filler or paper clay to cover the area and build over flaws - is often better than sanding. A mottled, marbled, or sponged background will often disguise bubbles and other box flaws. The texture of the box (or sometimes there is embossing) is great for dry brushing.

4. Paper mache, like wood, absorbs moisture. In a humid environment, it is a real problem. And, as most memory boxes will be kept as mementos for years, sealing is a good idea.



I always seal. I add a drop or two of an all-purpose glue (such as Elmer's) to my sealer. The surface may bubble when wet by sealer or basecoat (sometimes even during final painting or varnishing if you get an ornery box.) The bubbles may go away if you wait overnight.

Bubbles can be fixed, but it isn't easy and they often remain somewhat, even after fixing. Use a straight pin or needle to puncture the bubble. If it is huge, cut a slit with a razor blade. Fill the bubble with glue and press down. If the box keeps fighting consider the options above: texture or decoupage.

5. You can use spray paint on the inside or you can choose to paint it with your other paints. I often use old house paint or paint samples.

6. You can drill holes in paper mache to affix hinges, latches, and other embellishments. A hole was drilled into the domed box shown below to attach a tassel. Several holes were punched into the rim of the red/gold box and ribbon was laced back and forth. Just be sure to support the paper mache from the other side while drilling



7. Sometimes, there's a moving part, such as a hinged lid. The paint can crack when the paper mache is bent to open/close the box. One fix for this problem is to cover the area that bends with cloth adhesive tape, and then paint the tape.

8. Embellishments can be attached to the box. Think about emptying your sewing box trim - ribbons, lace, silk flowers, buttons, doilies, and paper trims can be added. Just use a good glue or holes/ties to attach. Also consider storage limitations. Once something is attached on top of a box, it may no longer be possible to nest it with other boxes.

9. Basecoat the box with the color of your choice. Some cultures consider black to be a color that expresses respect and dignity. Other people prefer to paint with light and cheerful colors. Any color is fine, and the



bottom, top, and inside can be painted differently.

10. Can't think of a design? Got any watercolor or colored pencil projects - any finished project on paper - just sitting around? Experiment with a small scrap to see how it reacts to decoupage, glue, varnish, etc.. Once you know what can be used, fix your design to the Memory Box. The cardinal is colored pencil on watercolor paper; it is glued and sealed with DecoArt Ultra-Matte DS124.



11. The design can be wrapped around the box and down the sides. Geometric designs or sponging can be a quick and easy way to add a design to the inside or sides of a box.



12. The actual design can be a hard choice. Remember that if you are painting the box because either an infant has died and it will go to NICU or an older person has died and the box is dedicated to a hospice facility, you are not painting for the deceased. You are painting for the family left behind.

Flowers seemed to be popular and liked by all. Mandelas, lace designs, rosemaling, different folk arts, and similar geometrics were suggested by some painters. Butterflies, cardinals, and doves, all of which are symbolic about loss of a loved one, are also thought to be good choices.



13. Sign the box as the artist. I usually decoupage a small card on the inner lid. It says, "This box was hand painted especially for you by a proud member of the TCDP Chapter of the Society of Decorative Painters." And I sign below that.

More than one nurse has said that your signature assures the recipient that there was a personal care in its creation. Do not be surprised if the family reaches out to you - even many years later.

14. Varnish the box - inside and out - with your favorite varnish.

15. After the varnish is completely dry, you can rub wax (most furniture waxes will do - but be careful, some of them are yellow) along the inside rim of the top and the upper rim of the bottom. Don't use liquid polish - use a solid wax. This will help prevent the top sticking to the bottom with years of storage. If you don't have any wax, rub with a similarly colored candle, soap, or wax paper. Test on a small spot, first.

16. Insert a sheet of wax paper between the box's top and bottom for interim storage and transport.

17. Bring the finished box into the next TCDP meeting and claim your Jewels!

There is a Facebook page that is dedicated to exchanging photos of memory boxes. It may help you get ideas. <https://www.facebook.com/groups/1049988538423552/> In addition, there is a website for the administration of an organization that tries to gather and distribute funds for the program. <http://memoryboxes.org>

Questions?: Give me a call or email LASpains2@gmail.com